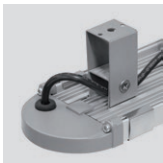


Weatherproof

ELW

IP65



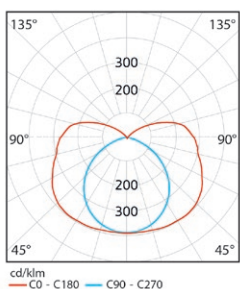
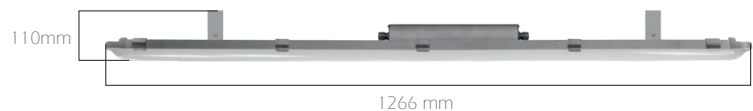
Suspension System

ELW waterproof fixtures have high protection class aluminum extrusion body against water and dust with LED light source. They can be used in many areas such as parking lots, storage areas and other areas for industrial purposes. They provide extra energy savings by reducing the light when it is not needed thanks to their suitability for automation.

(Driver On Board)



IP65 Driver Type



| Code | ELW120-40 | ELW120-60 | ELW120-80 |
|--------------------|-------------------------------|-----------|-----------|
| LED | High efficiency Mid-Power LED | | |
| System Power | 40 W | 60 W | 80 W |
| Light Flux | 4.400lm | 6.600lm | 8.800lm |
| Colour Temperature | 3000 - 4000 - 5000 - 6500 K | | |
| Cooler | Cooling from the body surface | | |
| Voltage | 220 volt - 50hz | | |
| Body | Aluminum extrusion | | |
| Diffuser | Opal - Polycarbonate diffuser | | |
| Colour | Matt anodized | | |
| Accessory | Assembly springs | | |
| Box Dimensions | 17x132x12 cm | | |
| Weight | 3.100 gr | | |