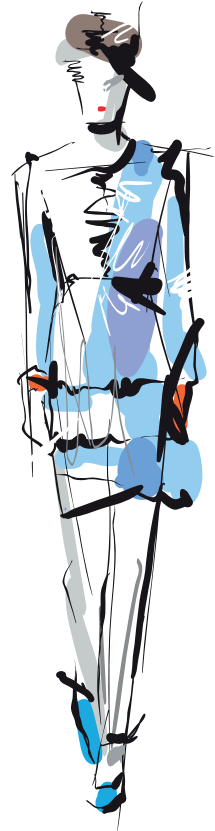


ShowLED L I T P A





DML-1



DML-2



DML-3



DML-4

ShowLED

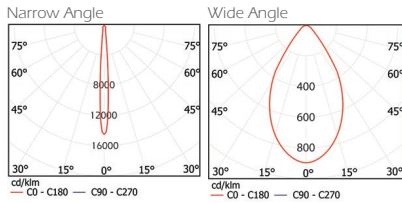


Body: Manufactured from 1mm thick high quality steel finished with 80 micron thick electrostatic powder coating.

LED: High Efficient COB LED

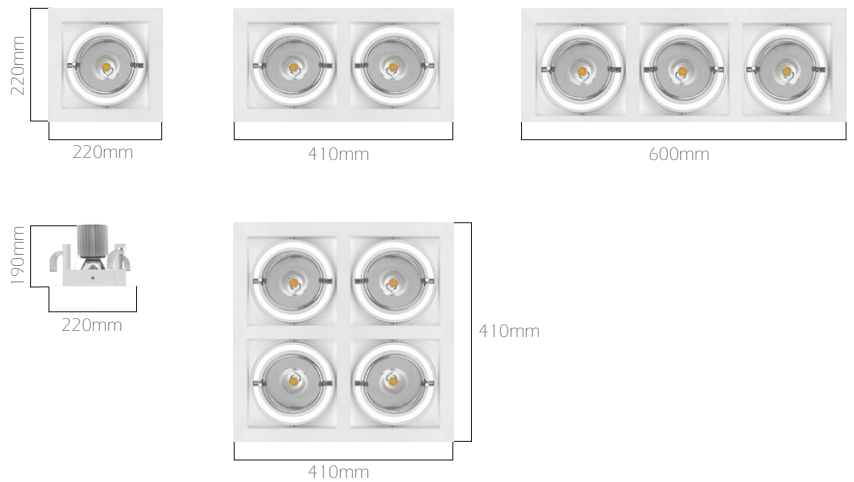
Reflector: Manufactured from 1 mm thick 99.9% vacuum anodized aluminium.

Heat Sink: Manufactured from 6063 T5 aluminium extrusion.



Code	LED(W)	System Luminous Flux (lm)	Color Temperature
DML-1	1 x 13-27-36W	1.350 - 2.650 - 3.350 lm	3000-4000-5000K
DML-2	2 x 13-27-36W	2.700 - 5.300 - 6.700 lm	3000-4000-5000K
DML-3	3 x 13-27-36W	4.050 - 7.950 - 10.050 lm	3000-4000-5000K
DML-4	4 x 13-27-36W	5.400 - 10.600 - 13.400 lm	3000-4000-5000K

LED drive currents: 13W (350mA), 27W (700mA), 36W (900mA).



LED



- Reduced heating due to special design
- Colour temperature options (3000K-4000K-5000K)
- High Color Rendering CRI of 80-90%

Code	Cut-out	Box Dimension	Weight	Protection Class
DML-1	180x180mm	240x240x210mm	2.100gr	IP20
DML-2	380x180mm	240x450x210mm	4.100gr	IP20
DML-3	570x180mm	240x640x210mm	6.200gr	IP20
DML-4	380x380mm	450x450x210mm	8.200gr	IP20

Reflector



The reflector surfaces are been coated using a vacuum metallization technique. As such the reflective efficiency reaches values of up-to 99.85%. The coating, also reduces tarnishing over the fixture life

Driver

- Compliance with CE and ROHS standards
- ENEC Marked
- High Efficiency % ≥ 88
- High Power Factor Cos $\varphi \geq 88$
- Long Operational Life

Heat Sink: It is manufactured from 6063 T5 aluminum extrusion, the dimensions of the heat-sink are determined on the basis of the fixture type, power, driver current, and similar factors. The heat-sink are determined in a manner to ensure that the LEDs on the fixture can be easily cooled even under the worst ambient conditions.

High efficiency COB LEDs are fastened by means of the fastening elements that have been developed by LITPA. Bergquist thermal material, which is applied between the LED and the aluminum surface, helps conduct the heat to the heat-sink under optimum conditions.

Stands for mounting on the ceiling: The adjustable stands can be affixed on ceiling surface of any length to ensure that the edges of the fixture are secured tightly on the ceiling. As such there are no gaps left between the ceiling and the fixture and any visual imperfections due to assembly can be prevented.

Body: is manufactured from 1 mm thick high quality steel. The surface is finished with 80 micron thick electrostatic powder paint.

Each and every spot on the fixture can be arranged independently as desired.



Reflector: Manufactured from 1 mm thick aluminum coated by means of vacuum anodizing method used to improve optical efficiency (99.9%). Reflectors of different light dispersion are used on the basis of the desired performance and optical characteristics of the fixture.

Glass Diffuser: Manufactured from 3 mm thick tempered glass. It is secured on the frame by means of the mounting components.



L I T P A

LITPA LIGHTING COMPANY

Office HQ:

Koza Plaza B Blok No:6/20
Teskstilkent - Esenler
Istanbul / TURKEY

Tel: +90 212 438 09 58
Fax: +90 212 438 09 57

Manufacturing Facility:

Haraççı - Hadimköy Yolu
Cad. NO:15 Haraççı Mah.
Arnavutköy - Istanbul / TURKEY

Tel: +90 212 683 09 87
Fax: +90 212 683 09 92

www.litpa.com