

EOSLED LITPA

EOSLED

SURFACE MOUNTED

SUSPENDED

DFR

60

80

20

Direct

DFR

60

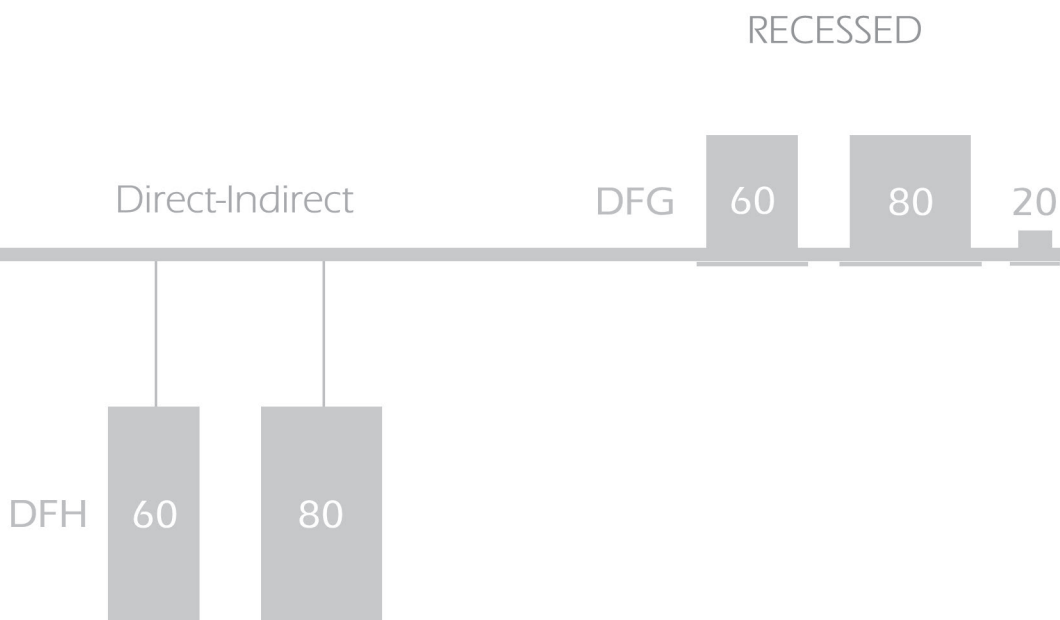
80

EOSLED series bring to the lighting an architectural characteristics and shape with DFG recessed and DFH-Direct-Indirect models.

It has an aluminum profile structure and is able to be produced with various widths and lengths. It distributes the light homogenously with its special pattern and gives comfort to the places.

Direct





Thanks to compatibility of inner structure of the product, LED placement is able to be made as required and it is able to be produced with various powers and lengths. In addition, recessed, pendant and surface-mounted models can be used together in the concepts to be applied.

SUSPENDED & SURFACE - DFR

In order to mount the luminaire onto the ceiling for EOSLED types, there is a special bracket mounted on the luminaire.



There are channel protrusions which can hold the plate on which PCB is mounted on the aluminum extrusion body and diffuser.



Luminaire Plate has been produced from DKP sheet metal.

In EOSLED luminaires, 180lm/watt Midpower Leds are used by arraying them on Aluminum PCB. And also, these PCBs are connected with Berquist material on the plate in order for them to conduct the heat that they get from the leds. PCB's mentioned, which are specially produced with the standards of Zhaga for Litpa, have been produced with the best way that they will conduct the heat produced in the leds to the cooling area.



There are two different diffuser options. Thanks to triangle structure on the internal surface of acrylic opal diffuser having high permeability characteristic, light coming out of light source spreads smoothly to the outer environment.

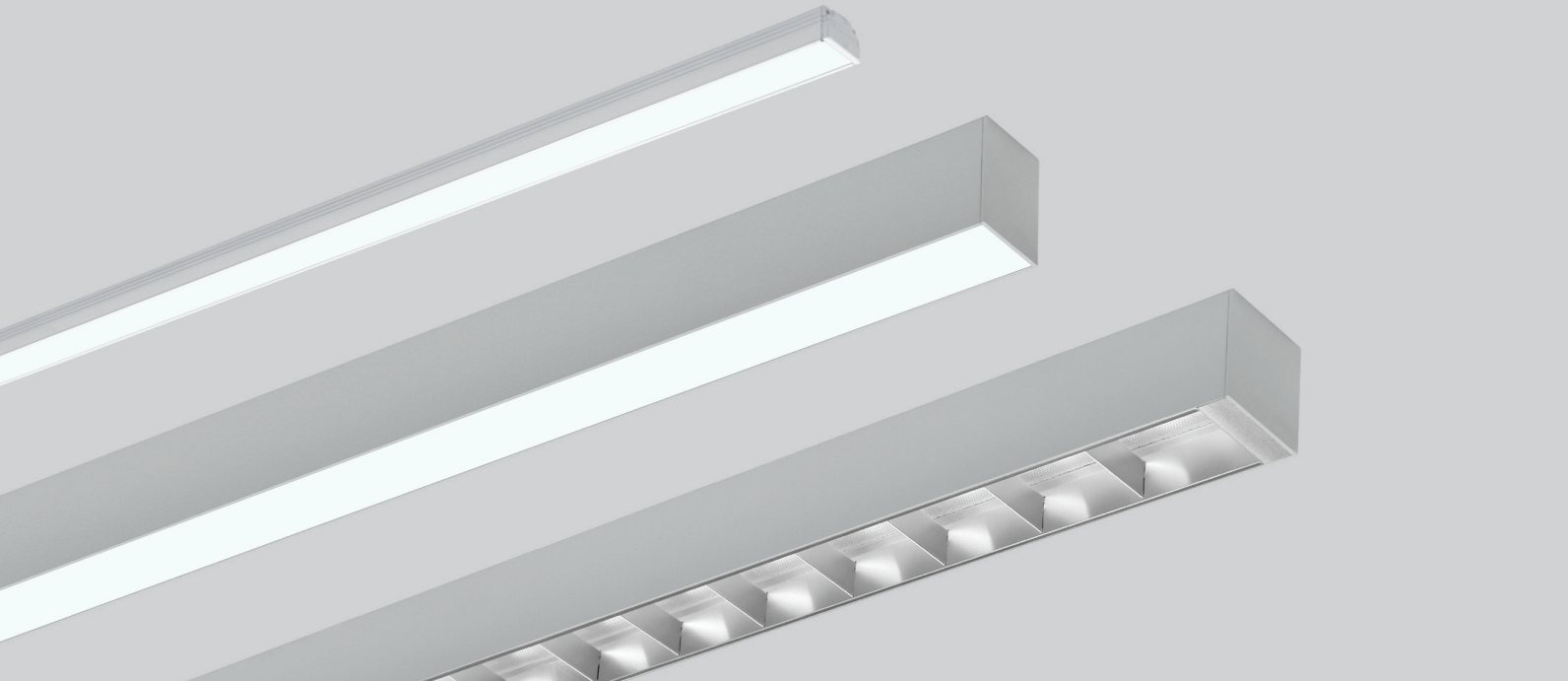


In the other diffuser option, light passing through prismatic structure spreads from double parabolic reflector to the surface to be lightened with extremely low glare values.



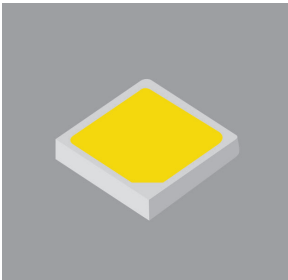


SUSPENDED & SURFACE - DFR



EOSLED luminaires, which can be used as surface-mounted or pendant, are produced with the widths of 20 - 60 - 80 mm. They can be used as a single profile with the length of up to about 2,5 m in linear applications. It is possible for it to be used as a light source by attaching from end to end. Thanks to special mounting apparatuses, pendant length can easily be adjusted.

LED



High Efficient Mid-Power LED Specifications:

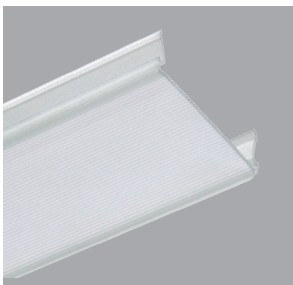
- Different colour temperatures (4.000 K - 5.000 K - 6.500 K)
- High colour rendering (80 - 90 %)
- @85°C LM 80-08 test report
- ≥ 50.000 hrs economical life as IESNA TM-21
- ENERGY STAR® lumen maintenance requirements
- 3-step MacAdam ellipse

DRIVER



- Suitable for emergency lighting
- Power Factor $\cos \phi$ 0,9/0,95
- Total harmonic distortion (THD) < 10
- Efficiency > 85%
- Ripple < 10%
- Class I
- Switching cycle value > 50.000
- 100.000 h lifetime $t_c = @65^\circ\text{C}$ & $t_c \text{ max} = 75^\circ\text{C}$
- LED driver has short circuit, open circuit, over load, over heating protection
- 1-10V DALI compatible (optional)

DIFFUSER



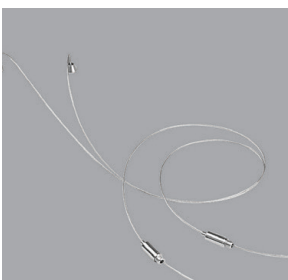
Thanks to triangle structure on the internal surface of acrylic opal diffuser having high permeability characteristic, light coming out of light source spreads smoothly to the outer environment.

REFLECTOR



Characteristic of being able for reflector to be attached to luminaires reduces glare and it makes it possible to be used on desks in offices thanks to this.

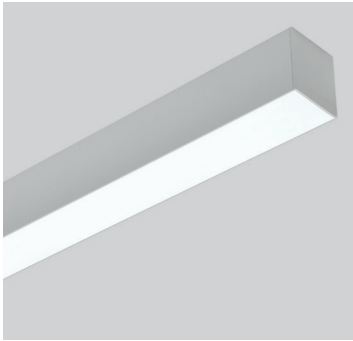
SUSPENSION



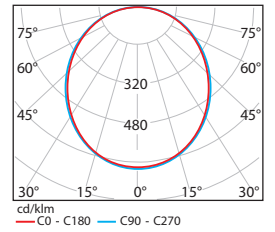
Bracket comprised of steel wire and chrome plated special wire holder.



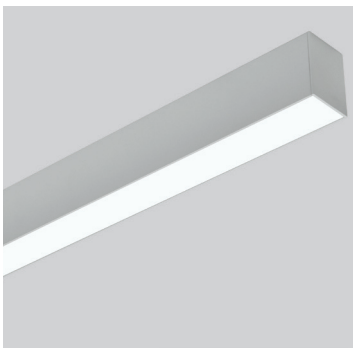
DFR 80



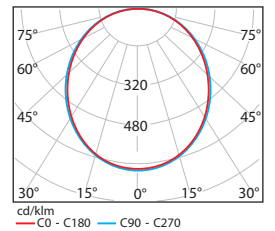
Body : Extruded aluminum painted with 80 micron electrostatic powder paint.
 Diffuser : Opal Lens
 LED : High efficient Mid-Power Led
 Protection : IP20



DFR 60



Body : Extruded aluminum painted with 80 micron electrostatic powder paint.
 Diffuser : Opal Lens
 LED : High efficient Mid-Power Led
 Protection : IP20



DFR 20



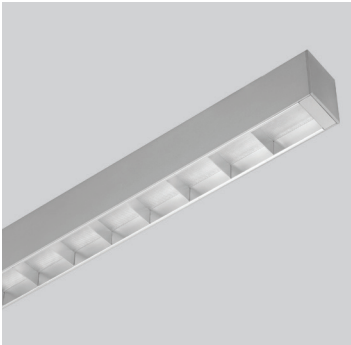
Body : Extruded aluminum painted with 80 micron electrostatic powder paint.
 Diffuser : Opal Lens
 LED : High efficient Mid-Power Led
 Protection : IP20



Code	Lenght (a)	System Power	System Light Flux	Colour Temperature	Weight
DFR 80/100	1.024mm	30 W	2.800 lm	3000K-4000K-5000K	3.400gr
DFR 80/120	1.194mm	36 W	3.360 lm	3000K-4000K-5000K	4.100gr
DFR 80/150	1.528mm	45 W	4.200 lm	3000K-4000K-5000K	5.200gr
DFR 60/100	1.024mm	30 W	2.800 lm	3000K-4000K-5000K	3.000gr
DFR 60/120	1.194mm	36 W	3.360 lm	3000K-4000K-5000K	3.750gr
DFR 60/150	1.528mm	45 W	4.200 lm	3000K-4000K-5000K	4.500gr
DFR 20/100	1.024mm	15 W	1.400 lm	3000K-4000K-5000K	500gr
DFR 20/120	1.194mm	18 W	1.680 lm	3000K-4000K-5000K	600gr
DFR 20/150	1.528mm	27 W	2.100 lm	3000K-4000K-5000K	750gr

CARISMA

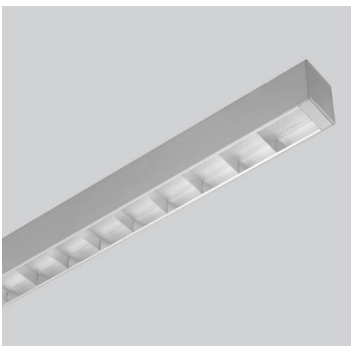
DFR 80/C



Body : Extruded aluminum painted with 80 micron electrostatic powder paint.
 Diffuser : Prismatic Lens
 Reflector : Double parabolic high pure aluminum
 LED : High efficient Mid-Power Led
 Protection : IP20



DFR 60/C



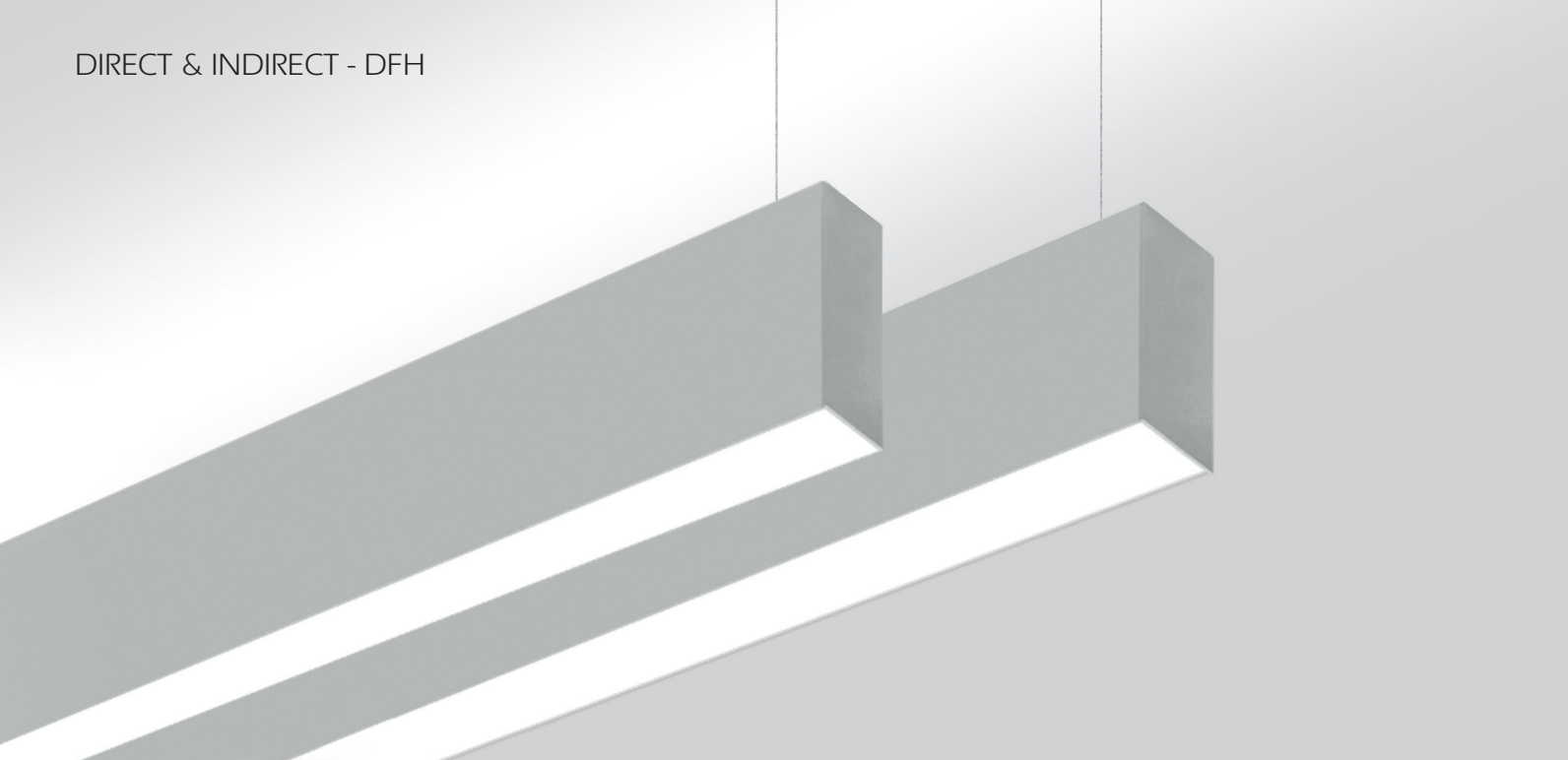
Body : Extruded aluminum painted with 80 micron electrostatic powder paint.
 Diffuser : Prismatic Lens
 Reflector : Double parabolic high pure aluminum
 LED : High efficient Mid-Power Led
 Protection : IP20



Code	Lenght (a)	System Power	System Light Flux	Color Temperature	Weight
DFR 80/C 100	1.024mm	30 W	2.800 lm	3000K-4000K-5000K	3.400gr
DFR 80/C 120	1.194mm	36 W	3.360 lm	3000K-4000K-5000K	4.100gr
DFR 80/C 150	1.528mm	45 W	4.200 lm	3000K-4000K-5000K	5.200gr
DFR 60/C 100	1.024mm	30 W	2.800 lm	3000K-4000K-5000K	3.000gr
DFR 60/C 120	1.194mm	36 W	3.360 lm	3000K-4000K-5000K	3.750gr
DFR 60/C 150	1.528mm	45 W	4.200 lm	3000K-4000K-5000K	4.500gr

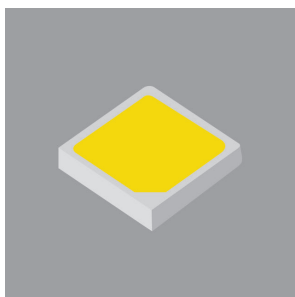


DIRECT & INDIRECT - DFH



DFH luminaire series, which are direct-indirect type, of EOSLED are produced with two different widths. They can be used as a single profile with the length of up to about 2,5 m in linear applications. Luminaires can give direct and indirect light. Luminaires are hung on ceiling with a steel wire and can be easily adjusted with special holder mechanism.

LED



High Efficient Mid-Power LED Specifications:

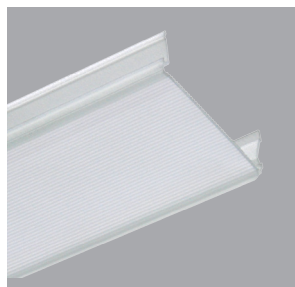
- Different colour temperatures (4.000 K - 5.000 K - 6.500 K)
- High colour rendering (80 - 90 %)
- @85°C LM 80-08 test report
- ≥ 50.000 hrs economical life as IESNA TM-21
- ENERGY STAR® lumen maintenance requirements
- 3-step MacAdam ellipse

DRIVER



- Suitable for emergency lighting
- Power Factor Cos ϕ 0,9/0,95
- Total harmonic distortion (THD) < 10
- Efficiency > 85%
- Ripple < 10%
- Class I
- Switching cycle value > 50.000 hrs
- 100.000 h lifetime $t_c = @65^\circ\text{C}$ & $t_c \text{ max} = 75^\circ\text{C}$
- LED driver has short circuit, open circuit, over load, over heating protection
- 1-10V DALI compatible (optional)

DIFFUSER



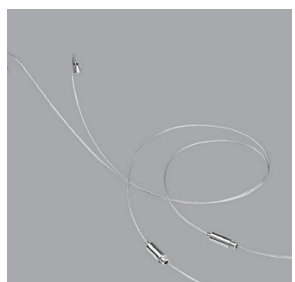
Thanks to triangle structure on the internal surface of acrylic opal diffuser having high permeability characteristic, light coming out of light source spreads smoothly to the outer environment.

INDIRECT



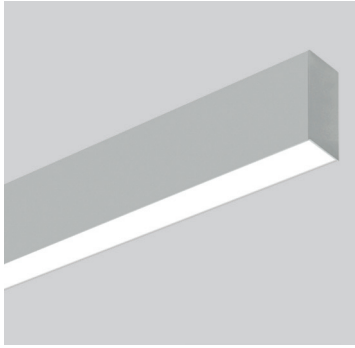
DFH pendant type luminaires can give lights in two ways, direct and indirect way.

SUSPENSION

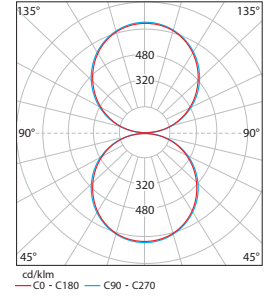


Bracket comprised of steel wire and chrome plated special wire holder.

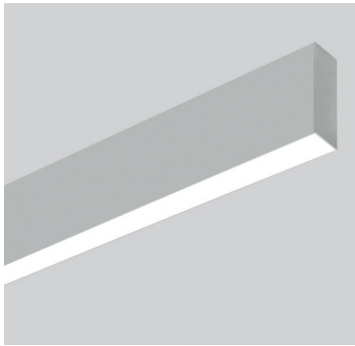
DFH 80



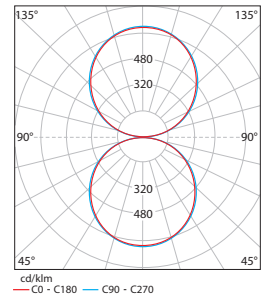
Body : Extruded aluminum painted with 80 micron electrostatic powder paint.
 Diffuser : Opal Lens
 LED : High efficient Mid-Power Led
 Protection : IP20



DFH 60



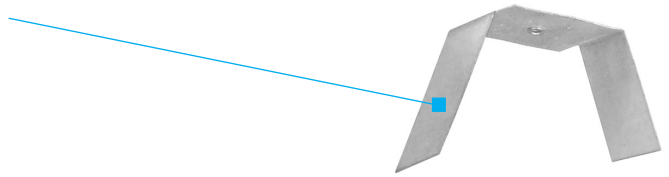
Body : Extruded aluminum painted with 80 micron electrostatic powder paint.
 Diffuser : Opal Lens
 LED : High efficient Mid-Power Led
 Protection : IP20



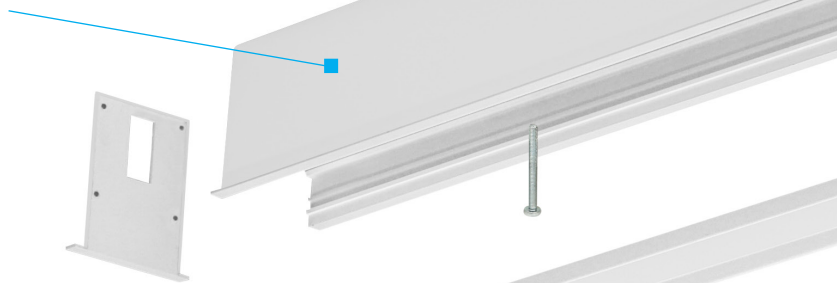
Code	Lenght(a)	System Power	System Light Flux	Color Temperature
DFH 80/100	1.024mm	2x30W	2x2.800 lm	3000K-4000K-5000K
DFH 80/120	1.194mm	2x36W	2x3.360 lm	3000K-4000K-5000K
DFH 80/150	1.528mm	2x45W	2x4.200 lm	3000K-4000K-5000K
DFH 60/100	1.024mm	2x30W	2x2.800 lm	3000K-4000K-5000K
DFH 60/120	1.194mm	2x36W	2x3.360 lm	3000K-4000K-5000K
DFH 60/150	1.528mm	2x45W	2x4.200 lm	3000K-4000K-5000K

RECESSED - DFG

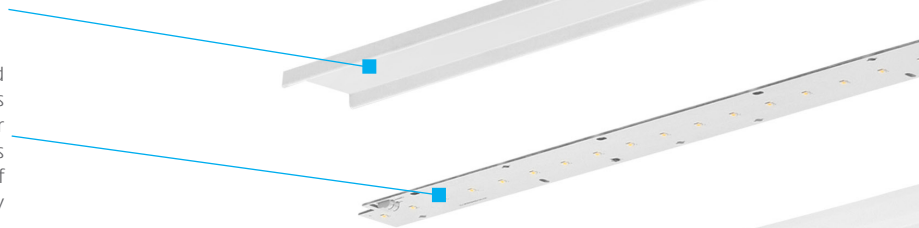
In recessed type of luminaires, there is a bracket which is retained with a knob from within the body in order to mount the luminaire onto ceiling. By squeezing the retention knobs, luminaires placed onto recessed ceiling are enabled to attach firmly ceiling edges of luminaire frame.



There are channel protrusions which can hold the plate on which led is mounted on the aluminum extrusion body



Luminaire plate has been produced from DKP sheet metal.



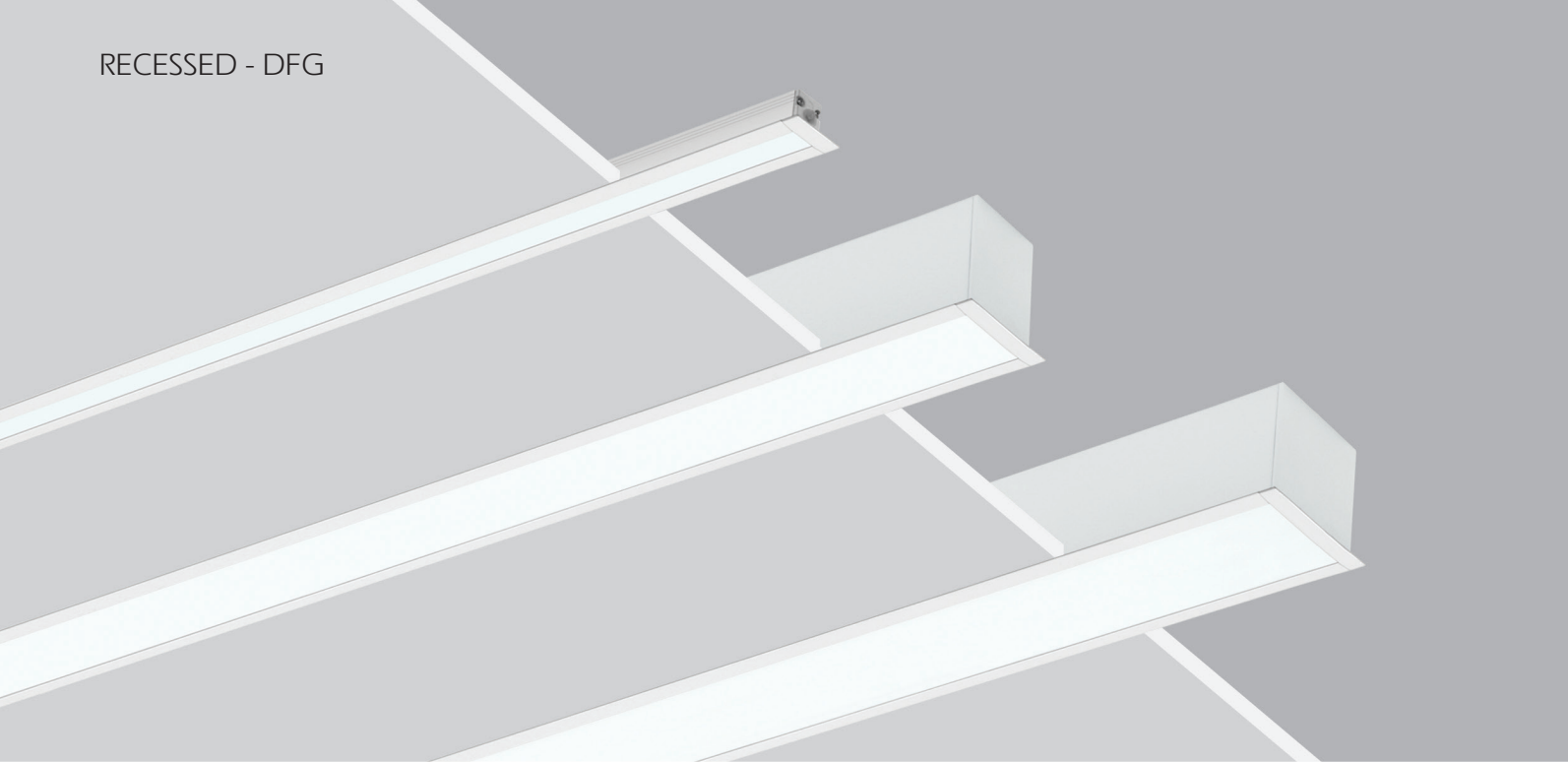
In EOSLED luminaires, 180lm/watt Midpower Leds are used by arraying them on Aluminum PCB. And also, these PCBs are connected with Berquist material on the plate in order for them to conduct the heat that they get from the leds. PCB's mentioned, which are specially produced with the standards of Zhaga for Litpa, have been produced with the best way that they will conduct the heat produced in the leds to the cooling area.

Thanks to triangle structure on the internal surface of acrylic opal diffuser having high permeability characteristic, light coming out of light source spreads smoothly to the outer environment.



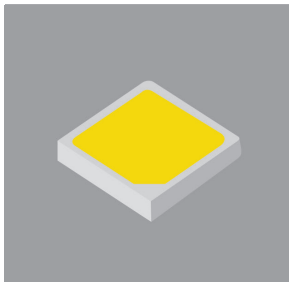


RECESSED - DFG



DFG luminaires, which are recessed type, of EOSLED, are produced as appropriate to be used on recessed ceilings. They can be used as a single profile with the length of up to about 2,5 m in linear applications. It is possible for it to be used as an uninterrupted light source by attaching from end to end. Ceiling mounting apparatus has been used in order for recessed ceiling to be able to attach firmly to ceiling edges of luminaire frame. Light coming out of LED source creates extremely soft atmospheres by passing through the diffuser with prismatic structure.

LED



High Efficient Mid-Power LED Specifications:

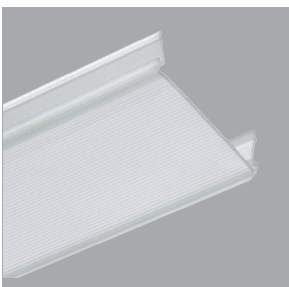
- Different colour temperatures (4.000 K - 5.000 K - 6.500 K)
- High colour rendering (80 - 90 %)
- @85°C LM 80-08 test report
- ≥ 50.000hrs economical life as IESNA TM-21
- ENERGY STAR® lumen maintenance requirements
- 3-step MacAdam ellipse

DRIVER



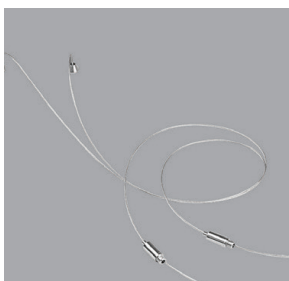
- Suitable for emergency lighting
- Power Factor Cos ϕ 0,9/0,95
- Total harmonic distortion (THD) < 10
- Efficiency > 85%
- Ripple < 10%
- Class I
- Switching cycle value > 50.000
- 100.000 h lifetime t_c =@65°C & t_c max=75 °C
- LED driver has short circuit, open circuit, over load, over heating protection
- 1-10V DALI compatible (optional)

DIFFUSER



Thanks to triangle structure on the internal surface of acrylic opal diffuser having high permeability characteristic, light coming out of light source spreads smoothly to the outer environment.

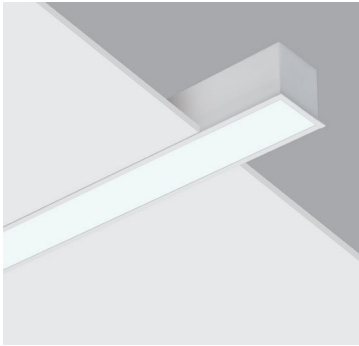
SUSPENSION



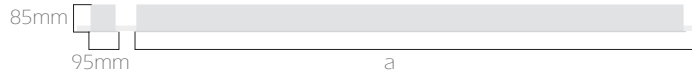
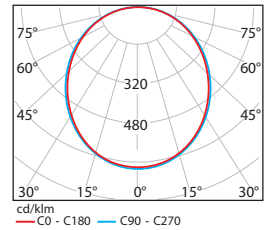
Bracket comprised of steel wire and chrome plated special wire holder.



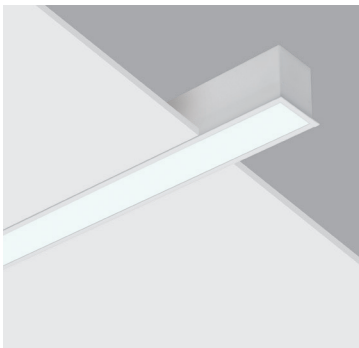
DFG 80



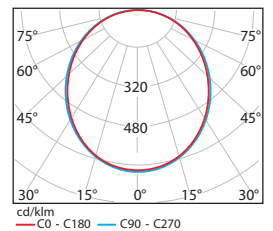
Body : Extruded aluminum painted with 80 micron electrostatic powder paint.
 Diffuser : Opal Lens
 LED : High efficient Mid-Power Led
 Protection : IP20



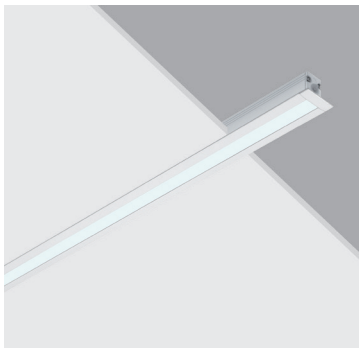
DFG 60



Body : Extruded aluminum painted with 80 micron electrostatic powder paint.
 Diffuser : Opal Lens
 LED : High efficient Mid-Power Led
 Protection : IP20



DFG 20



Body : Extruded aluminum painted with 80 micron electrostatic powder paint.
 Diffuser : Opal Lens
 LED : High efficient Mid-Power Led
 Protection : IP20



Code	Lenght (a)	System Power	System Light Flux	Color Temperature	Weight
DFG 80/100	1.034 lm	30W	2.800lm	3000K-4000K-5000K	3.400gr
DFG 80/120	1.204mm	36W	3.360lm	3000K-4000K-5000K	4.100gr
DFG 80/150	1.538mm	45W	4.200lm	3000K-4000K-5000K	5.200gr
DFG 60/100	1.034mm	30W	2.800lm	3000K-4000K-5000K	3.000gr
DFG 60/120	1.204mm	36W	3.360lm	3000K-4000K-5000K	3.750gr
DFG 60/150	1.538mm	45W	4.200lm	3000K-4000K-5000K	4.500gr
DFG 20/100	1.038mm	15W	1.400lm	3000K-4000K-5000K	500gr
DFG 20/120	1.208mm	18W	1.680lm	3000K-4000K-5000K	600gr
DFG 20/150	1.542mm	27W	2.100lm	3000K-4000K-5000K	750gr

L I T P A

LITPA LIGHTING COMPANY

Office HQ:

Koza Plaza B Blok No:6/20
Teskstilkent - Esenler
Istanbul / TURKEY

Tel: +90 212 438 09 58
Fax: +90 212 438 09 57

Manufacturing Facility:

Haraççı - Hadımköy Yolu
Cad. No:15 Haraççı Mah.
Arnavutköy - Istanbul / TURKEY

Tel: +90 212 683 09 87
Fax: +90 212 683 09 92

Ankara Office:

Ziyabey Cad. Kardelen Apt.
No: 30/14
Balgat - Ankara / TURKEY

Tel: +90 312 284 58 05