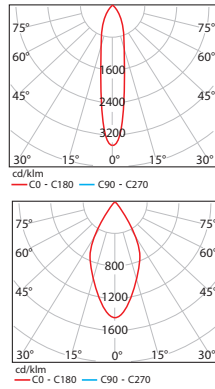
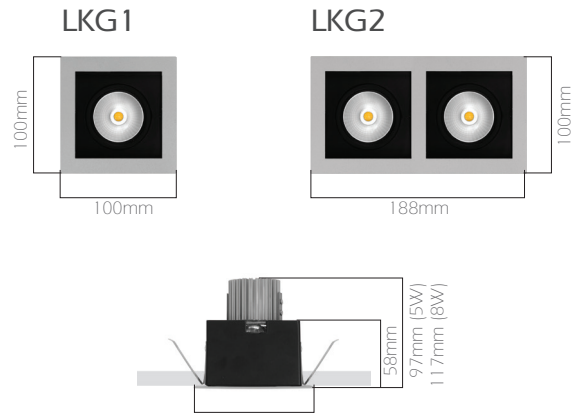
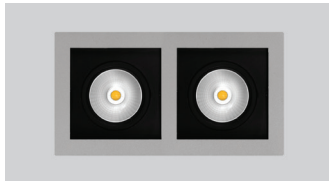


LKG1



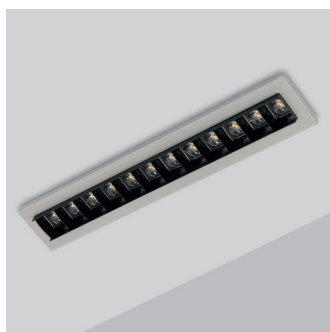
LKG2



IP20

Code	LKG 1		LKG 2	
LED	High Efficiency LED			
System Power	5.5 W	8 W	2x5.5 W	2x8 W
Light Flux	480lm	660 lm	960 lm	1320 lm
Colour Temperature	3000 - 4000 - 5000 K			
Voltage	220V - 50Hz			
Body	1 mm thick DKP sheet painted with electro-static powder paint			
Reflector	High efficiency aluminum			
Cooler	Aluminum extrusion			
Frame	1,5mm thick DKP, inner frame aluminum injection			
Box Dimension	30x44x15 cm (6pcs)			
Weight	3.200 gr (6pcs)		5.500 gr (6pcs)	
Cut-Out	93X93 mm		93X181 mm	

LKG/M



IP20

Code	LKG/M
LED	High Efficiency Power LED
System Power	15 - 25W
Light Flux	1.000 - 1.650 lm
Lens	Special 12pcs grid lens
Colour Temperature	3000 - 4000 - 5000 K
Voltage	220V - 50Hz
Body	0,6 mm thick DKP sheet and electrostatic powder paint
Frame	0,6mm thick DKP sheet steel
Reflector	High efficient aluminum
Colour	Gray
Cut-Out	38mm x 295 mm
Weight	1.200 gr

