



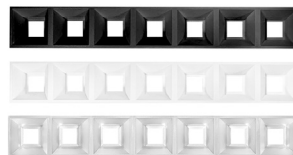
# ORION

## Decorative Luminaires

ORION is a unique alternative for a variety of needs either as wall fixtures or as freestanding lights and can be used for general or local purposes.

The combination of elegance and sophistication harmonize to produce superb lighting, which gives Orion its special quality. The ORION series could be the best alternative for your decoration due to its aesthetic appeal.

### Reflector Types

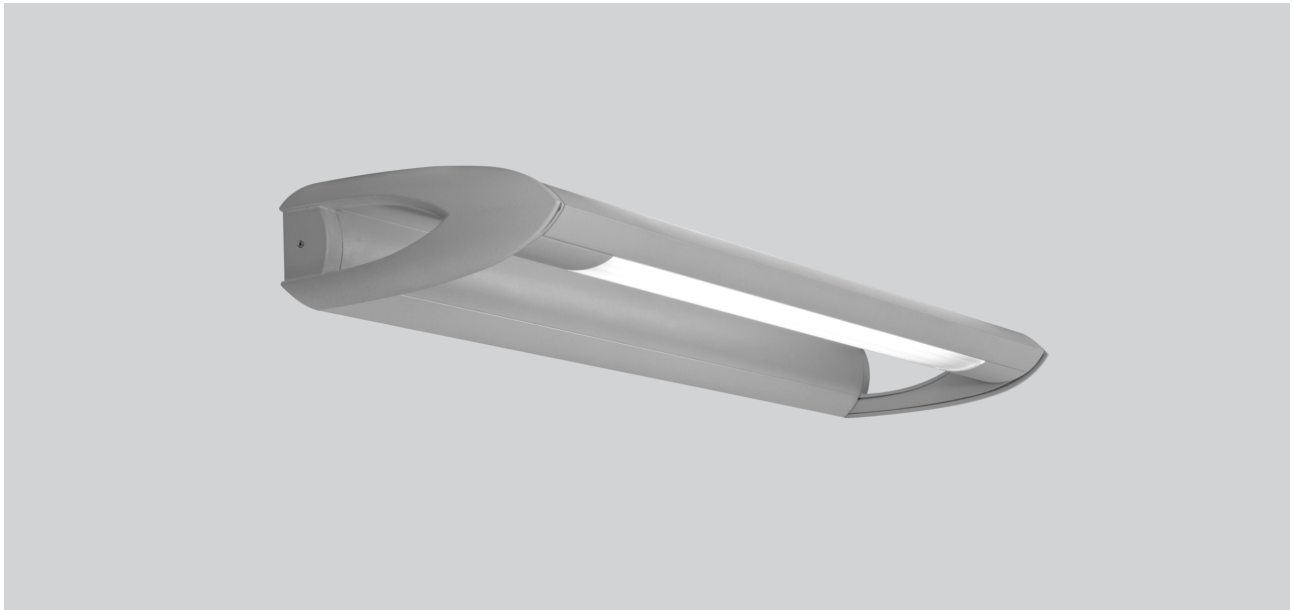


Black, White and Metallic



Opal or Prismatic Diffuser





RAL COLORS

Std. 9006

Opt. 9005

9016

**FPD/AP**

IP20  

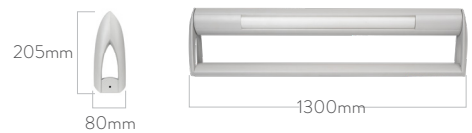
Code	Luminous Flux	System Power	Weight
FPD/AP 118	1.400 lm	1x18 W	3.4 Kg
FPD/AP 218	2.800 lm	2x18 W	4 Kg

**Body:** Aluminum injection and aluminum extrusion

**Driver:** Included

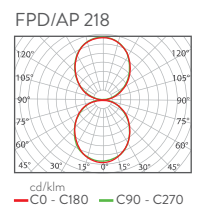
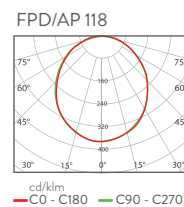
**Diffuser:** Prismatic polycarbonate or opal  
**Voltage:** 220~240 VAC

**Color Temperature:** 3000-4000-5000-6500K  
**Led:** Mid-Power



  
**BOX DIMENSIONS**  
22x122x10cm

  
**BOX WEIGHT**  
4.3 kg



RAL COLORS

- Std. 9006
- Opt. 9005
- 9016



**FPD-ST**

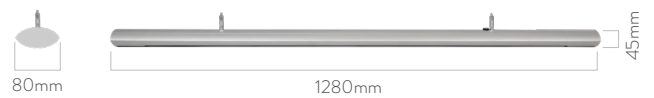
IP20

Code	Beam Angle	Luminous Flux	System Power	Weight
FPD-ST	110°	3.200 lm	54 W	3.4 Kg

**Body:** Aluminum  
**Reflector:** PC  
**Lens:** PMMA

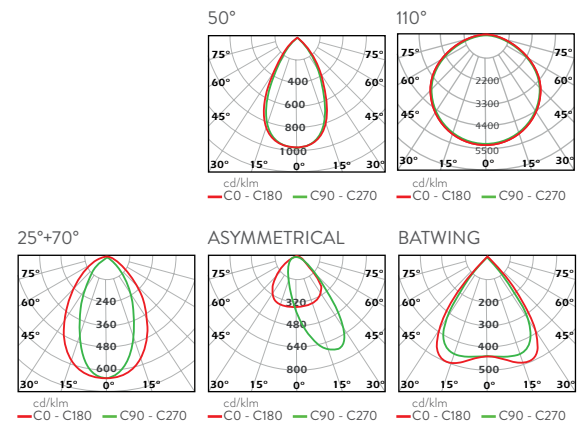
**Driver:** Included  
**Voltage Range:** 220~240 VAC

**Color Temperature:** 2700-3000-4000-5000-6500K  
**Led:** Mid-Power



**BOX DIMENSIONS**  
15x130x10cm

**BOX WEIGHT**  
3.8 kg





RAL COLORS

- Std.  9006
- Opt.  9005
-  9016

**FPD-LD**

IP20  

Code	Beam Angle	Luminous Flux	System Power	Weight
FPD/LD	110°	3.200 lm	54 W	4.7 Kg

**Body:** Aluminum

**Base:** Aluminum injection

**Reflector:** PC

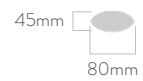
**Lens:** PMMA

**Voltage Range:** 220~240 VAC

**Driver:** Included

**Color Temperature:** 2700-3000-4000-5000-6500K

**Led:** Mid-Power



**BOX DIMENSIONS**  
15x180x10cm



**BOX WEIGHT**  
5 kg