

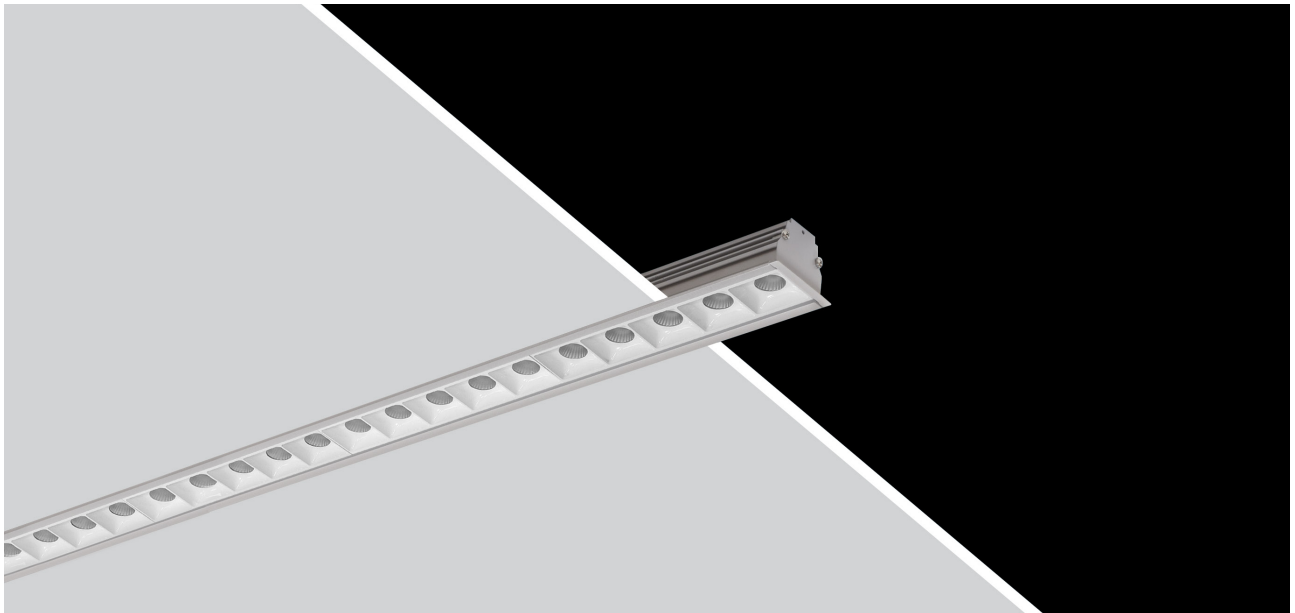
# DARK-INN

## Decorative Systems

DARK-INN luminaires meet the need for glare-free and optimal lighting in various applications with their customizable designs. Litpa's specially developed luminaires utilize Dark optics technology, ensuring high light control while maintaining luminaire efficiency.

The fixtures offer black or white Dark optics options, which can be combined with opal diffusers. This allows for reflection-free screen visibility in project-oriented spaces such as technical drawing, graphic design, and similar fields where precise light angles are critical.

The advanced optical structure minimizes unwanted glare and reflections, making DARK-INN an ideal solution for workspaces that demand both visual comfort and high performance.



RAL COLORS

Std.  
9006

Opt.  
9005  
9016

DLG/WWWWW

IP20  

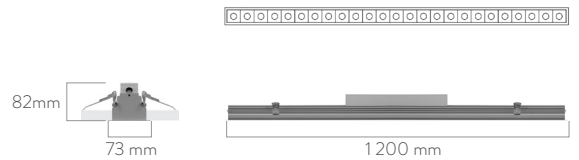
Code	Beam Angle	Luminous Flux	System Power	Weight
DLG/WWWWW	45°	6.300 lm	55 W	2.4 Kg



**Body:** Aluminum extrusion  
**Reflector:** PC

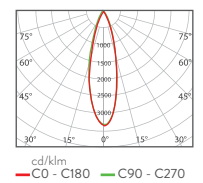
**Driver:** Included  
**Voltage:** 220~240VAC

**Color Temperature:** 2700-3000-4000-5000-6500K, TW  
**Led:** Mid Power



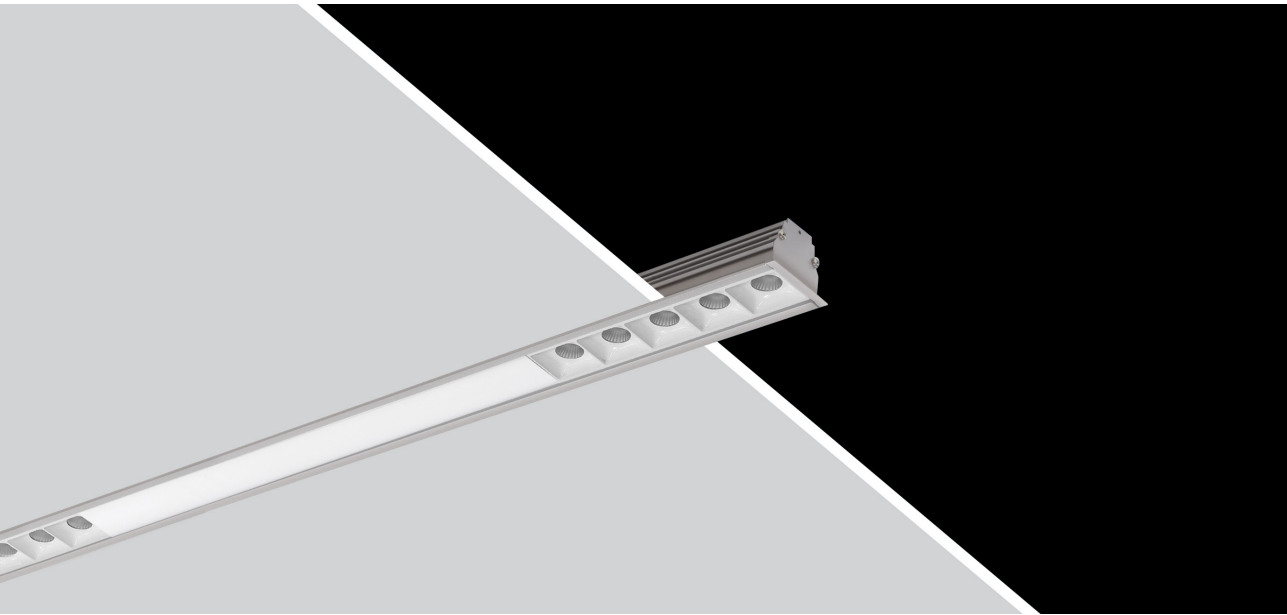
  
**BOX DIMENSIONS**  
122x10x10cm

  
**BOX WEIGHT**  
2.8 kg



RAL COLORS

- Std. 9006
- Opt. 9005
- 9016



**DLG/WOOOW**

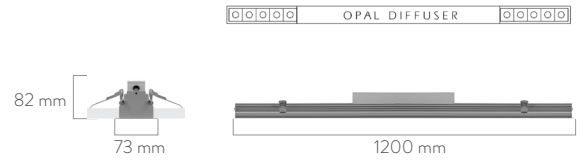
IP20

Code	Beam Angle	Luminous Flux	System Power	Weight
DLG/WOOOW	50°	5.200 lm	55 W	2.3Kg

**Body:** Aluminum extrusion  
**Diffuser:** Opal  
**Reflector:** PC

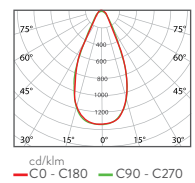
**Lens:** PMMA  
**Driver:** Included  
**Voltage:** 220~240VAC

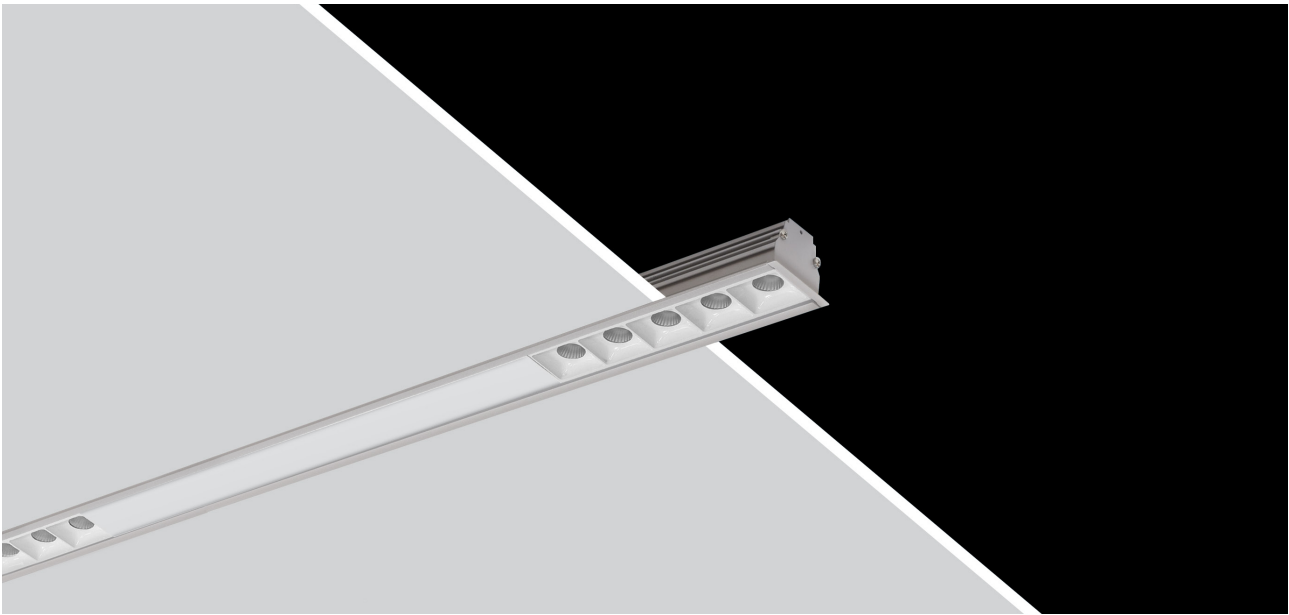
**Color Temperature:** 2700-3000-4000-5000-6500K  
**Led:** Mid Power



**BOX DIMENSIONS**  
122x10x10cm

**BOX WEIGHT**  
2.7 kg





RAL COLORS

- Std.  9006
- Opt.  9005
-  9016

**DLG/WCCCW**

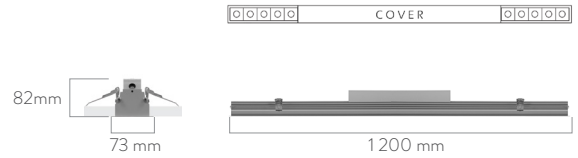
IP20  

Code	Beam Angle	Luminous Flux	System Power	Weight
DLG/WCCCW	45°	2.900 lm	22 W	2.3Kg

**Body:** Aluminum extrusion  
**Reflector:** PC  
**Lens:** PMMA

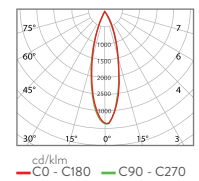
**Driver:** Included  
**Voltage:** 220~240VAC

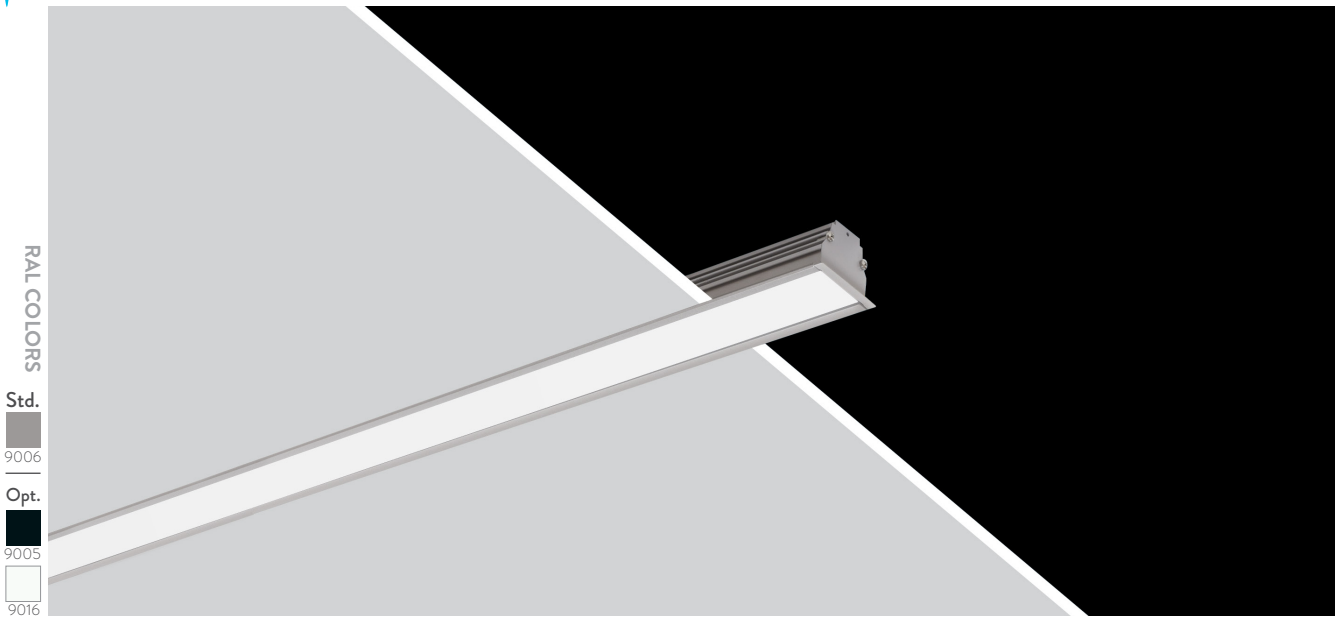
**Color Temperature:** 2700-3000-4000-5000-6500K  
**Led:** Mid Power



  
**BOX DIMENSIONS**  
 122x10x10cm

  
**BOX WEIGHT**  
 2.7 kg





**DLG/OPAL**

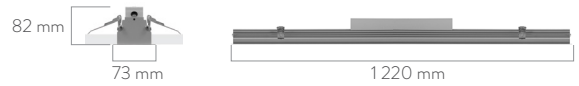
IP20

Code	Beam Angle	Luminous Flux	System Power	Weight
DLG/O	110°	3.300 lm	35 W	2.3Kg

**Body:** Aluminum extrusion  
**Driver:** Included

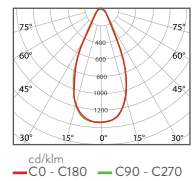
**Diffuser:** Opal  
**Voltage:** 220~240VAC

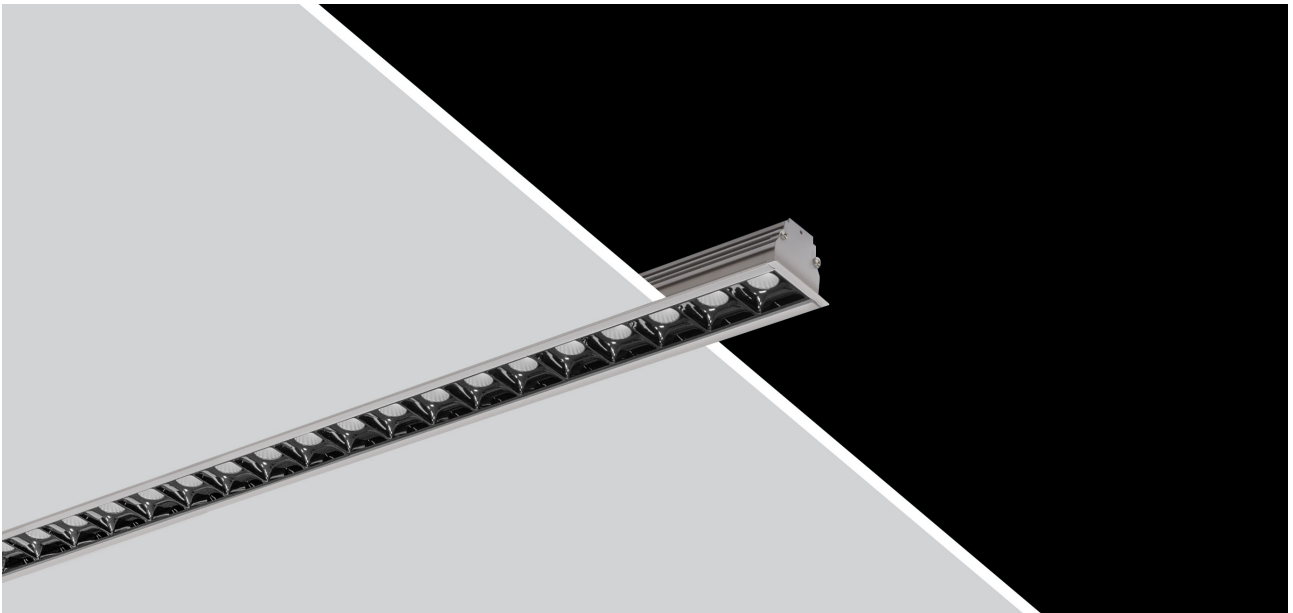
**Color Temperature:** 2700-3000-4000-5000-6500K  
**Led:** Mid Power Led



**BOX DIMENSIONS**  
122x10x10cm

**BOX WEIGHT**  
2.7 kg





RAL COLORS

Std.

9006

Opt.

9005

9016

**DLG/BBBB**

IP20  

Code	Beam Angle	Luminous Flux	System Power	Weight
DLG/BBBB	45°	6.300 lm	55 W	2.4 Kg



**Body:** Aluminum extrusion

**lens:** PMMA

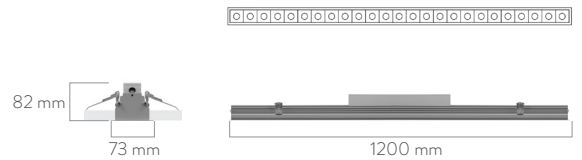
**Color Temperature:** 2700-3000-4000-5000-6500K, TW

**Reflector:** PC

**Voltage:** 220~240VAC

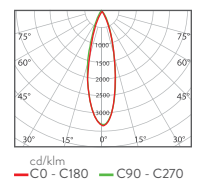
**Led:** Mid Power Led

**Driver:** Included



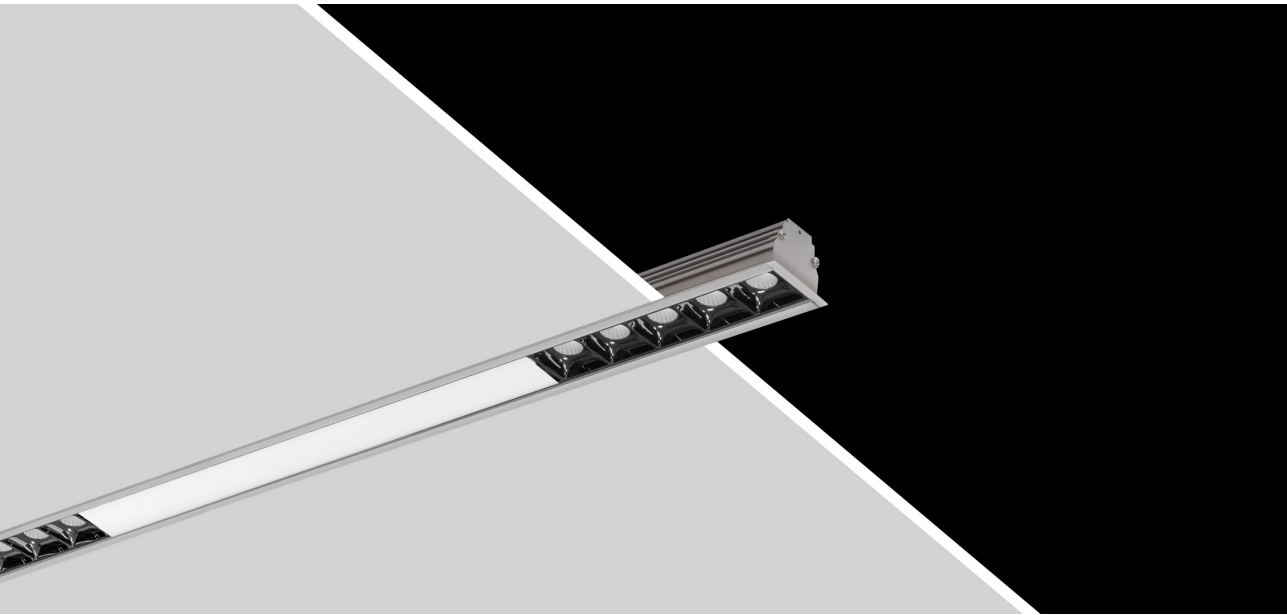
  
**BOX DIMENSIONS**  
 122x10x10cm

  
**BOX WEIGHT**  
 2.8 kg



RAL COLORS

- Std. 9006
- Opt. 9005
- 9016



**DLG/BOOOB**

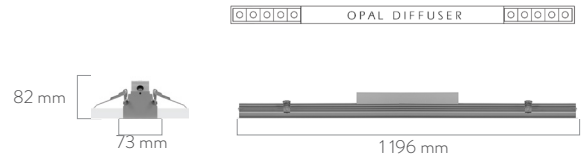
IP20

Code	Beam Angle	Luminous Flux	System Power	Weight
DLG/BOOOB	50°	5.200 lm	55 W	2.3Kg

**Body:** Aluminum extrusion  
**Diffuser:** Opal  
**Reflector:** PC

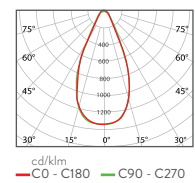
**Lens:** PMMA  
**Driver:** Included  
**Voltage:** 220~240VAC

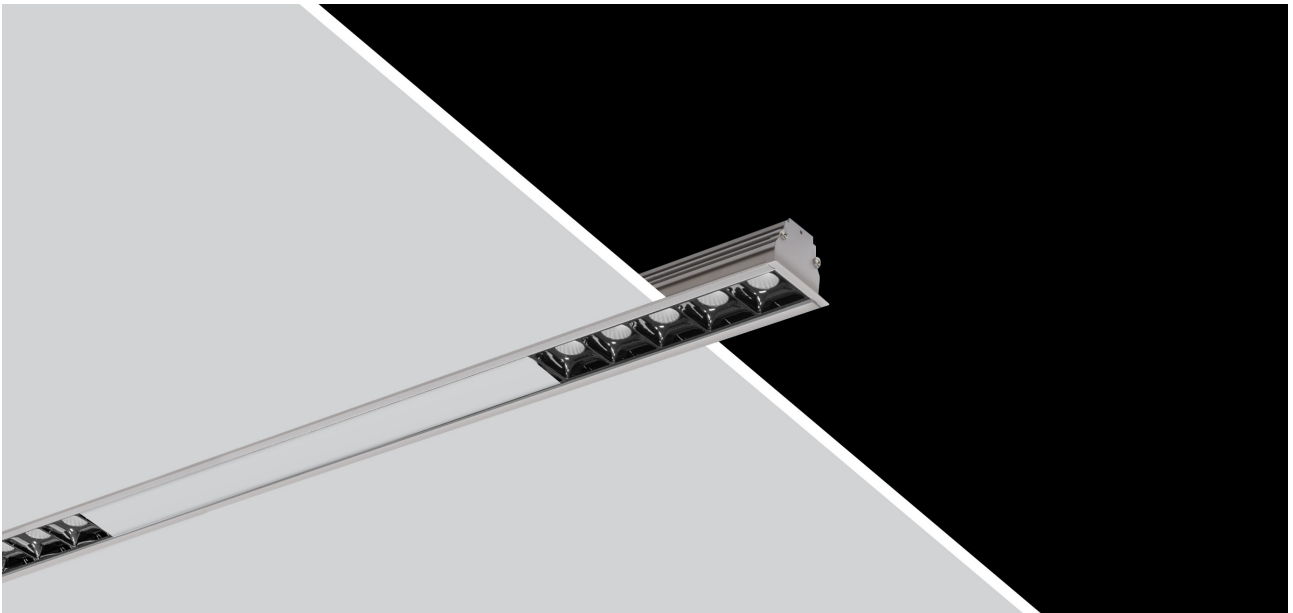
**Color Temperature:** 2700-3000-4000-5000-6500K  
**Led:** Mid Power



**BOX DIMENSIONS**  
122x10x10cm

**BOX WEIGHT**  
2.7 kg





RAL COLORS

- Std.  9006
- Opt.  9005
-  9016

**DLG/BCCCB**

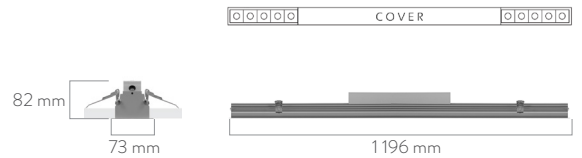
IP20  

Code	Beam Angle	Luminous Flux	System Power	Weight
DLG/BCCCB	45°	2.900 lm	22 W	2.3Kg

**Body:** Aluminum extrusion  
**Reflector:** PC  
**Lens:** PMMA

**Driver:** Included  
**Voltage:** 220~240VAC

**Color Temperature:** 2700-3000-4000-5000-6500K  
**Led:** Mid Power



  
**BOX DIMENSIONS**  
 122x10x10cm

  
**BOX WEIGHT**  
 2.7 kg

