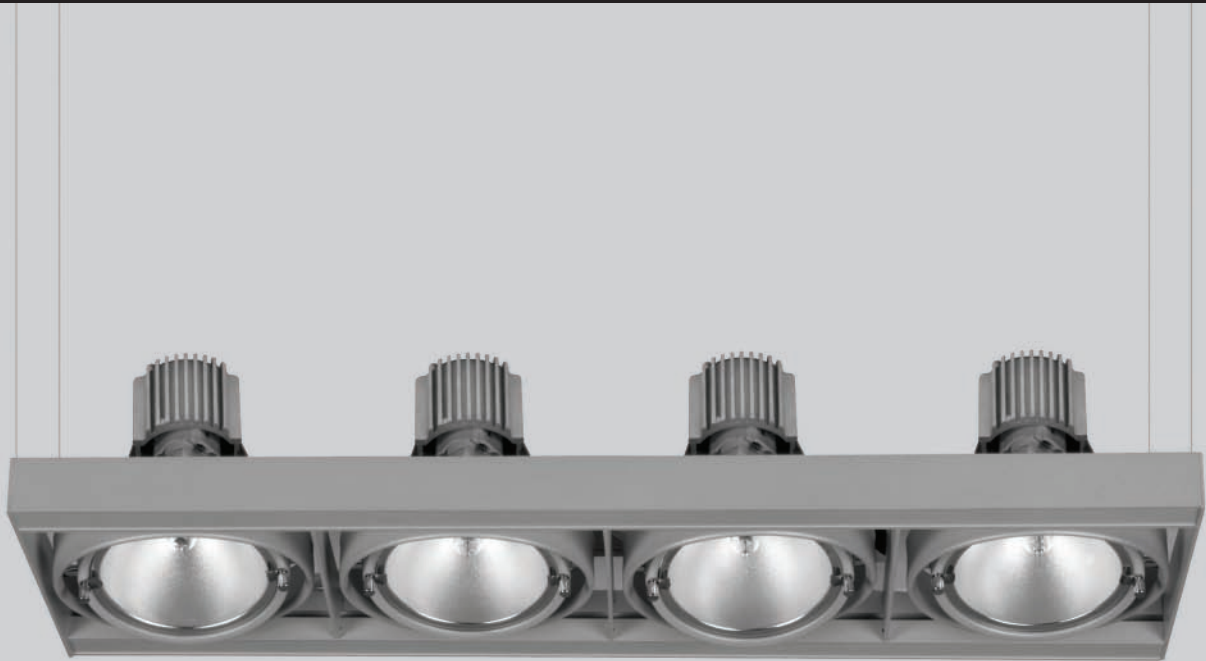


# DMS



Surface

## Mounted & Pendant Downlights

A decorative product that addresses the needs in surface mounted or pendant metal halide applications.

They offer you adjust the light level with 3 or 4 lamps options. They do their illumination function without any loss of relief sensation in the area with their elegant hanger strings that make the fixture seem like it is flying.

There is an opportunity to catch some different performance level for same product with different reflector type alternatives. One can get desired performance without any loss of light by means of the gasket that can move in two axes.



## DMS/L



### Description

**Body:** Aluminum extrusion.  
**Reflector:** Manufactured with 1 mm thick high pure (99.9%) aluminium.  
**Glass:** 3.5 mm tempered glass and special screwed.

Code	Lamp	Color
DMS/L	35/70/150 W HCI-T	White
DMS/L	35/70/150 W HQI-T	White
DMS/L	R111	White

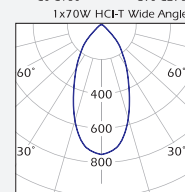
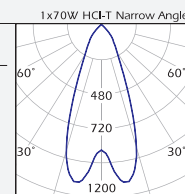
### Box Dimensions

Inside box 1 PCS.  
DMS/L 310x705x175 mm

### Weight

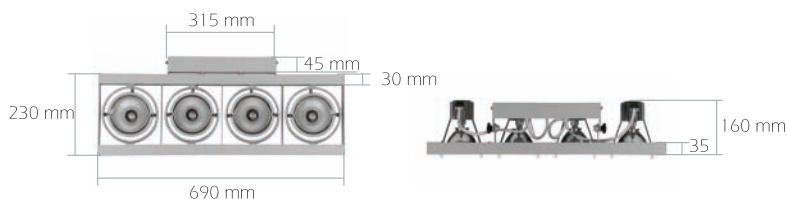
DMS/L 6.000 gr

**Protection: IP20**

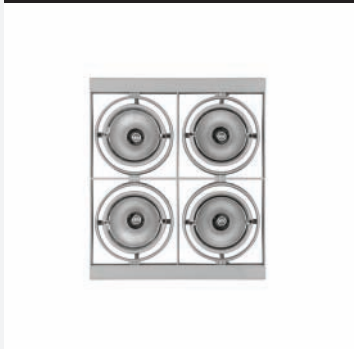


Dicroic Filters

### Dimensions



## DMS/K



### Description

**Body:** Aluminum extrusion.  
**Reflector:** Manufactured with 1 mm thick high pure (99.9%) aluminium.  
**Glass:** 3.5 mm tempered glass with special screws.

Code	Lamp	Color
DMS/K	35/70/150 W HCI-T	White
DMS/K	35/70/150 W HQI-T	White
DMS/K	R111	White

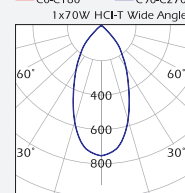
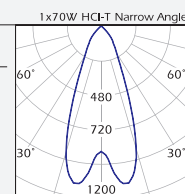
### Box Dimensions

Inside box 1 PCS.  
DMS /K 485x360x175 mm

### Weight

DMS/L 6.000 gr

**Protection: IP20**



### Dimensions

